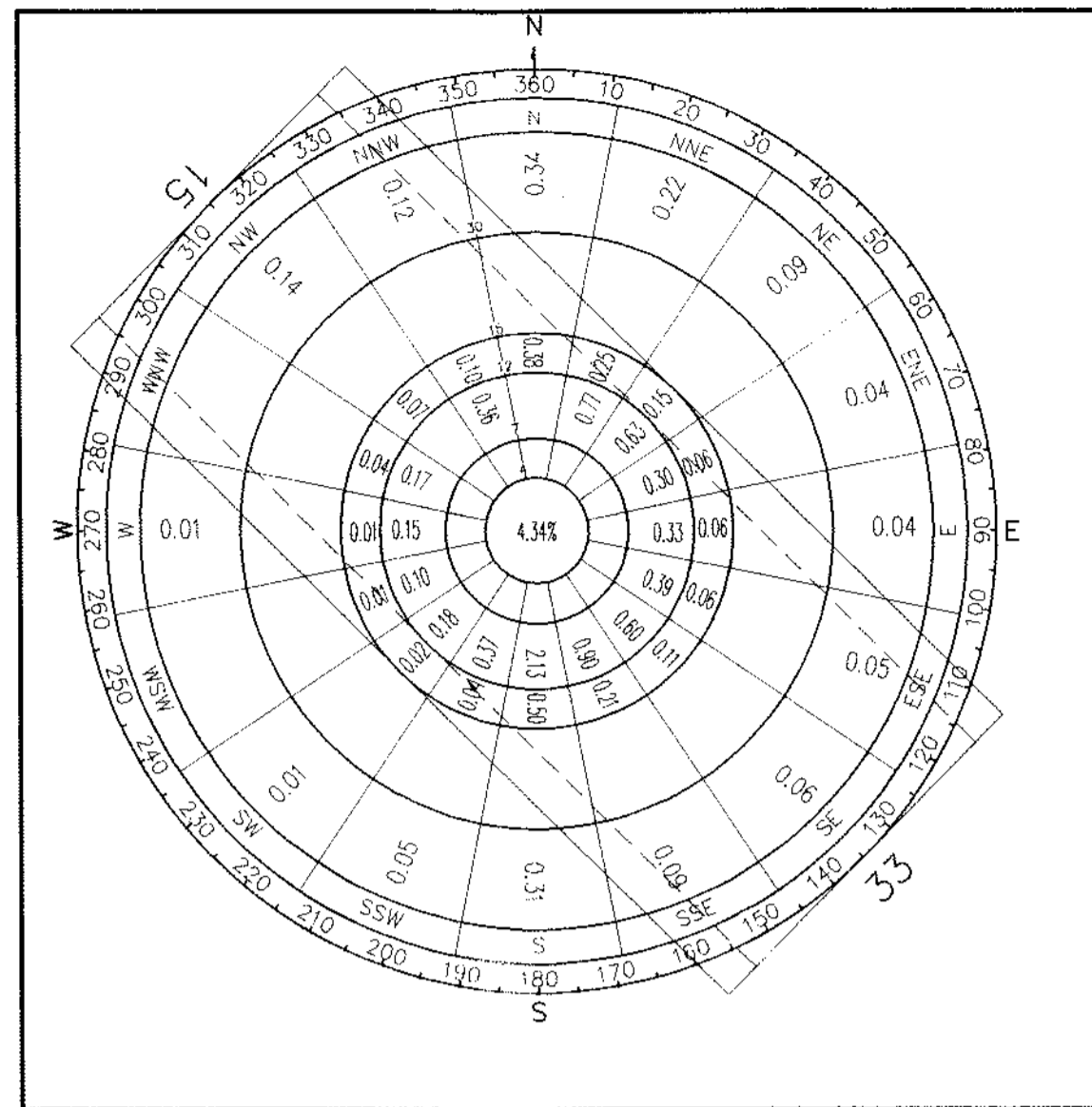
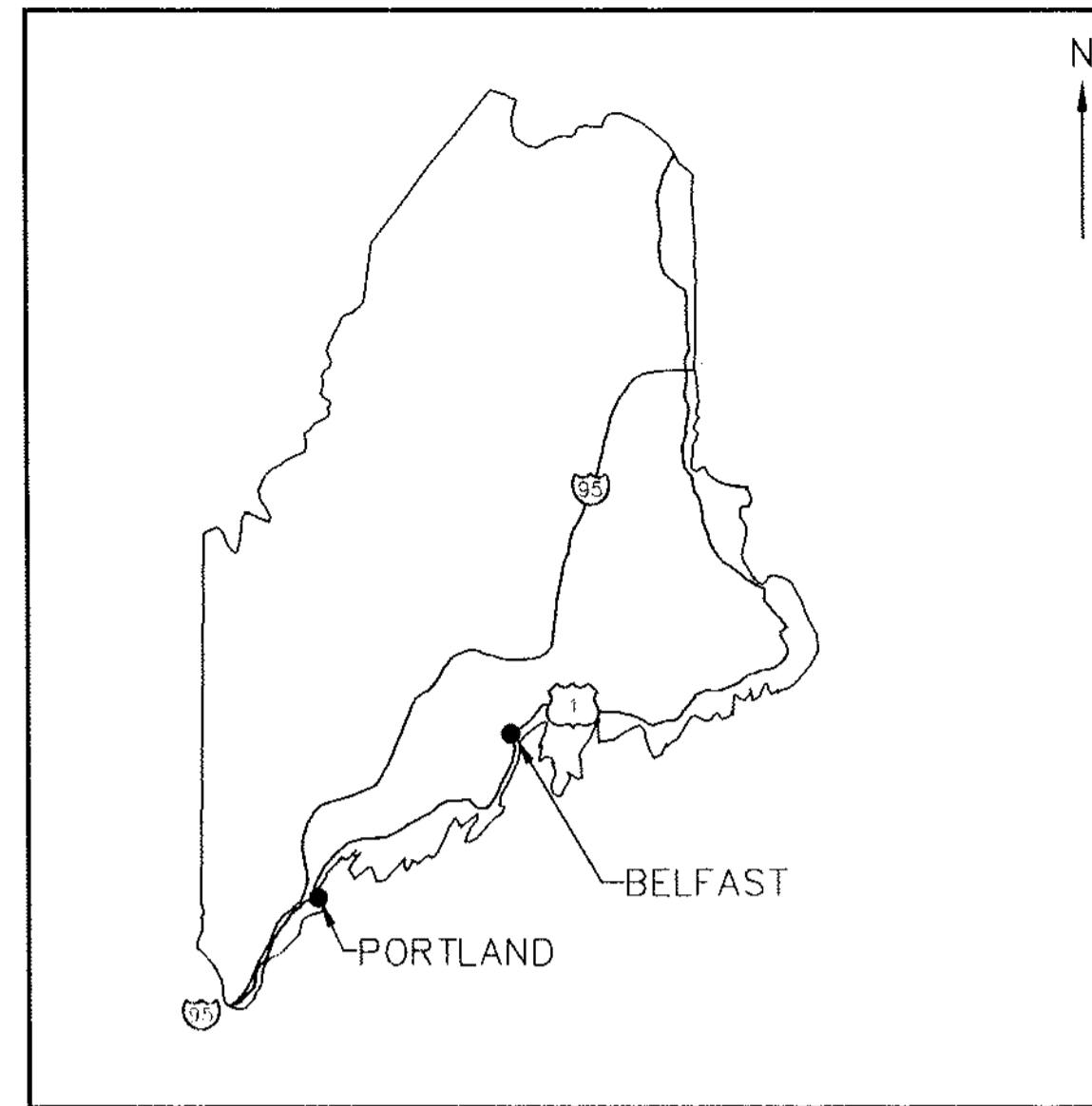


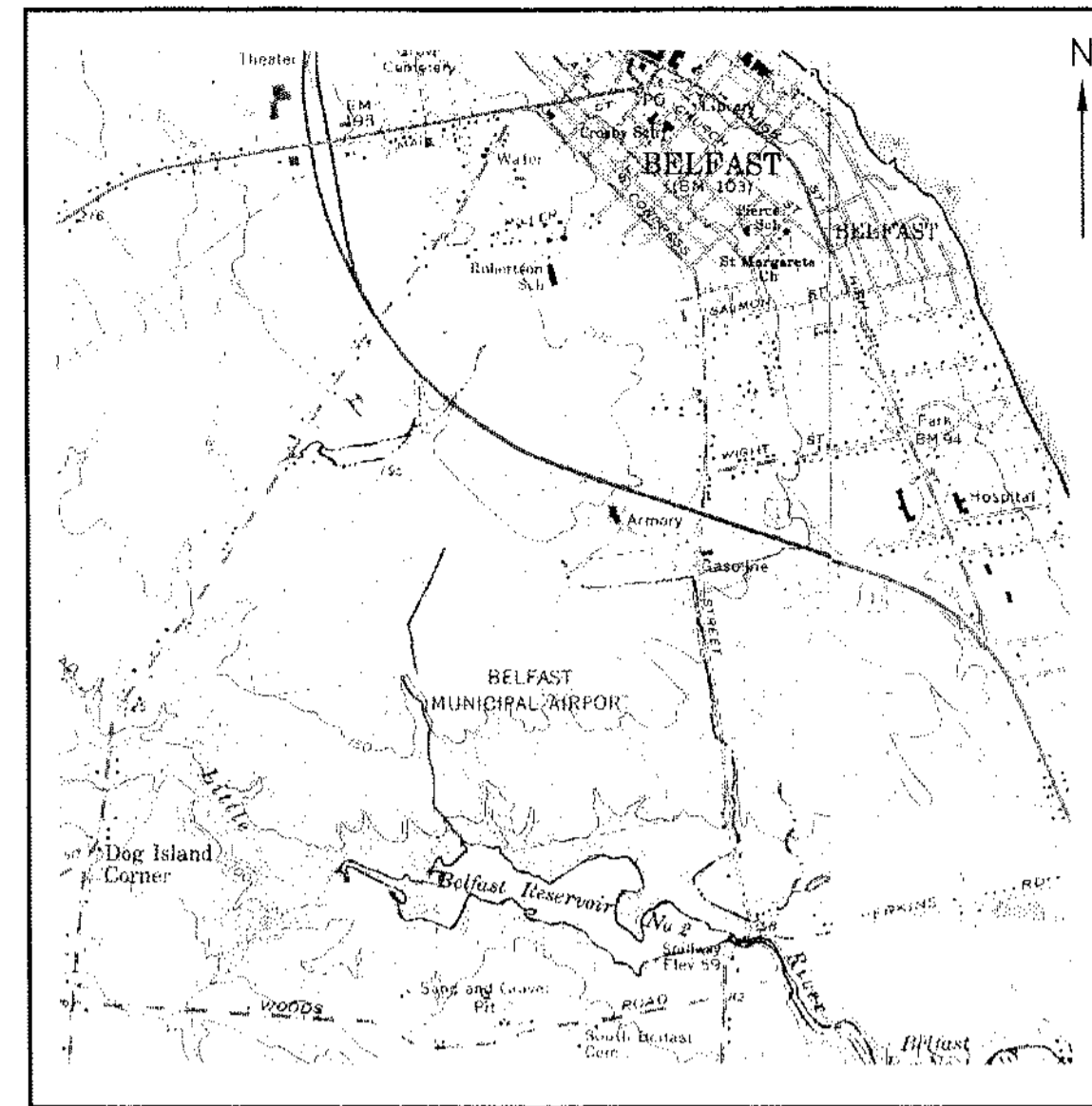
ALL WEATHER WINDROSE



IFR WINDROSE



LOCATION MAP



VICINITY MAP

| SHEET | DESCRIPTION |
|-------|-------------------------------------|
| 1 | TITLE SHEET |
| 2 | EXISTING AIRPORT LAYOUT PLAN |
| 3 | ULTIMATE AIRPORT LAYOUT PLAN |
| 4 | TERMINAL AREA PLAN |
| 5 | APPROACH PLAN AND PROFILE |
| 6 | RUNWAY 15-33 |
| 7 | FAR PART 77 IMAGINARY SURFACES PLAN |
| 8 | LAND-USE PLAN |

INDEX OF SHEETS

ALL WEATHER WINDROSE

| RUNWAYS | 12 MPH | 15 MPH |
|----------|--------|--------|
| 15 | 51.7% | 53.3% |
| 33 | 66.9% | 69.3% |
| COMBINED | 91.7% | 95.7% |
| CALMS | 26.9% | |

IFR WINDROSE

| RUNWAYS | 12 MPH | 15 MPH |
|----------|--------|--------|
| 15 | 62.7% | 64.2% |
| 33 | 50.5% | 52.3% |
| COMBINED | 88.0% | 91.3% |
| CALMS | 25.2% | |

PERIOD : DECEMBER 1941 - MARCH 1965
 LOCATION : BANGOR INTERNATIONAL AIRPORT
 BANGOR, MAINE
 SOURCE : NATIONAL CLIMATIC DATA CENTER
 ASHEVILLE, NORTH CAROLINA

AIRPORT LAYOUT PLAN 1994 - 2014

BELFAST MUNICIPAL AIRPORT BELFAST, MAINE

AIP NO. 3-23-0007-0194

Consulting Engineers

OFFICES
 No. Springfield, Vermont 05150
 Montpelier, Vermont 05602
 Manchester, New Hampshire 03101
 Portland, Maine 04101-3900
 Westford, Massachusetts 01886
 Greenfield, Massachusetts 01301
 Naples, Florida 33942
 Fort Charlotte, Florida 33954
 Sarasota, Florida 34238

ENGINEERING DISCIPLINES
 Civil
 Electrical
 Environmental
 Industrial
 Mechanical
 Solid Waste
 Structural
 Transportation
 Wastewater
 Water

ASSOCIATED DISCIPLINES
 Construction Management
 Site Assessments
 Surveying

APPLIED SCIENCES
 Geologic
 Hydrologic
 Water Quality



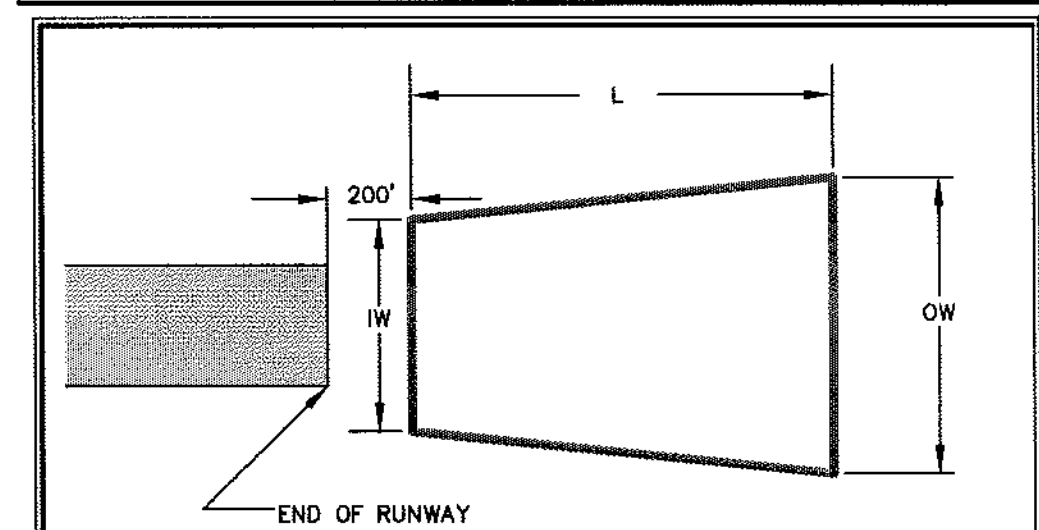
BELFAST AIP 3-99

| RUNWAY DATA | EXISTING | ULTIMATE |
|-------------------------------|---|--|
| % WIND COVERAGE (ALL WEATHER) | R/W 15: 12 MPH 15 MPH R/W 33: 51.7% 53.3% COMBINED: 61.7% 69.3% CALMS: 26.9% 26.9% | SAME |
| PAVEMENT STRENGTH | 30,000 LBS. SINGLE WHEEL | SAME |
| APPROACH SURFACES | R/W 15: 20:1 NP R/W 33: 20:1 NP | R/W 15: 20:1 NP R/W 33: 20:1 NP |
| RUNWAY MARKINGS | NON-PRECISION | NON-PRECISION |
| RUNWAY LIGHTING | MIRL | SAME |
| RUNWAY NAVAIDS | R/W 15: VASI-2L R/W 33: NONE | R/W 15: PAPI, REIL R/W 33: PAPI, REIL |
| RSA DIMENSIONS | 120' X 240' BEYOND RUNWAY END | 150' X 300' BEYOND RUNWAY END |
| EFFECTIVE GRADIENT | 0.87% | SAME |
| RUNWAY END ELEVATIONS | R/W 15: 198.0' MSL R/W 33: 161.0' MSL | SAME |
| RUNWAY END COORDINATES | R/W 15: 44°24'48.414"N 69°01'04.105"W R/W 33: 44°24'21.250"N 69°02'24.071"W | SAME |

| EXISTING | ULTIMATE | BUILDINGS |
|----------|----------|-----------------------------|
| ① | Ⓐ | ADMINISTRATION BUILDING |
| ② | | STORAGE SHED |
| ③ | | FBO HANGAR |
| ④ | | PRIVATE T-HANGAR |
| ⑤ | | PRIVATE CONVENTIONAL HANGAR |
| ⑥ | | PRIVATE CONVENTIONAL HANGAR |
| ⑦ | | PRIVATE CONVENTIONAL HANGAR |
| ⑧ | | PRIVATE CONVENTIONAL HANGAR |
| ⑨ | | PRIVATE CONVENTIONAL HANGAR |
| ⑩ | | PRIVATE CONVENTIONAL HANGAR |
| ⑪ | | PRIVATE CONVENTIONAL HANGAR |
| ⑫ | | PRIVATE CONVENTIONAL HANGAR |
| | ⑬ | PRIVATE CONVENTIONAL HANGAR |
| | ⑭ | PRIVATE CONVENTIONAL HANGAR |
| | ⑮ | PRIVATE CONVENTIONAL HANGAR |
| | ⑯ | PRIVATE CONVENTIONAL HANGAR |
| | ⑰-⑱ | PRIVATE T-HANGARS |

NOTE: EXISTING BUILDINGS 1-4 ARE TO BE REMOVED OR REPLACED WITH NEW BUILDINGS IN THE RELOCATED TERMINAL AREA.

| AIRPORT DATA | EXISTING | ULTIMATE |
|-------------------------------|---|---|
| AIRPORT ELEVATION | 196.0' MSL | SAME |
| AIRPORT REFERENCE POINT | LAT. 44°24'34.873"N LONG. 69°00'44.124"W | LAT. 44°24'34.020"N LONG. 69°00'45.370"W |
| MEAN MAX. TEMP. (HOTTEST MO.) | 81°F | SAME |
| TAXIWAY LIGHTING | NONE | MITL |
| TAXIWAY MARKING | CENTERLINE, SIGNAGE | SAME |
| AIRPORT/TERRAIN NAVAIDS | LIGHTED WINDCONE ROTATING BEACON/NDB | SAME |
| AIRPORT REFERENCE CODE (ARC) | BI | BII |
| ACREAGE OWNED IN FEE SIMPLE | 221± ACRES | SAME |
| ACREAGE OWNED IN EASEMENT | 80± ACRES | 107± ACRES |
| USE/OWNERSHIP | PUBLIC/PUBLIC | SAME |



| RUNWAY | INNER WIDTH (IW) | OUTER WIDTH (OW) | LENGTH (L) |
|--------|------------------|------------------|------------|
| R/W 15 | 500' | 700' | 1000' |
| R/W 33 | 500' | 700' | 1000' |

| LEGEND | EXISTING | ULTIMATE |
|---|-------------|----------|
| PAVEMENT | [Symbol] | [Symbol] |
| AIRPORT PROPERTY LINE | [Symbol] | SAME |
| AVIGATION EASEMENT | [Symbol] | [Symbol] |
| FENCE LINE | [Symbol] | [Symbol] |
| BUILDING | [Symbol] | [Symbol] |
| TREE LINE | [Symbol] | [Symbol] |
| AIRPORT REFERENCE POINT (ARP) | [Symbol] | SAME |
| WETLANDS (SKETCH-MAP LEVEL DELINEATION) ** | [Symbol] | SAME |
| LIGHTED WINDCONE | [Symbol] | SAME |
| SEGMENTED CIRCLE | [Symbol] | SAME |
| MAINE STATE GRID TICKS | [Symbol] | SAME |
| UTILITY POLE | [Symbol] | SAME |
| CONTOURS (2-FOOT INTERVALS) | [Symbol] | SAME |
| AIRPORT BEACON | [Symbol] | [Symbol] |
| OBJECT FREE AREA (OFA) | NOT SHOWN * | [Symbol] |
| RUNWAY SAFETY AREA (RSA) | NOT SHOWN * | [Symbol] |
| BUILDING RESTRICTION LINE (BRL) (NOTE: 20' BUILDING HEIGHT) | NOT SHOWN * | [Symbol] |
| DIRT ROADWAY | [Symbol] | SAME |
| BRUSH LINE | [Symbol] | SAME |
| RETAINING WALL | [Symbol] | SAME |
| TREE CLEARING (ASSUME 60' TREES) | N/A | [Symbol] |

* REFER TO "EXISTING AIRPORT LAYOUT PLAN" (SHEET 2)

FOR APPROVAL BY FEDERAL AVIATION ADMINISTRATION

APPROVED BY: *[Signature]*
MANAGER, AIRPORTS DIVISION

DATE: 12-16-99

FOR APPROVAL BY MAINE DEPARTMENT OF TRANSPORTATION/
OFFICE OF PASSENGER TRANSPORTATION

APPROVED BY: *[Signature]*
DIRECTOR

DATE: 11-8-99

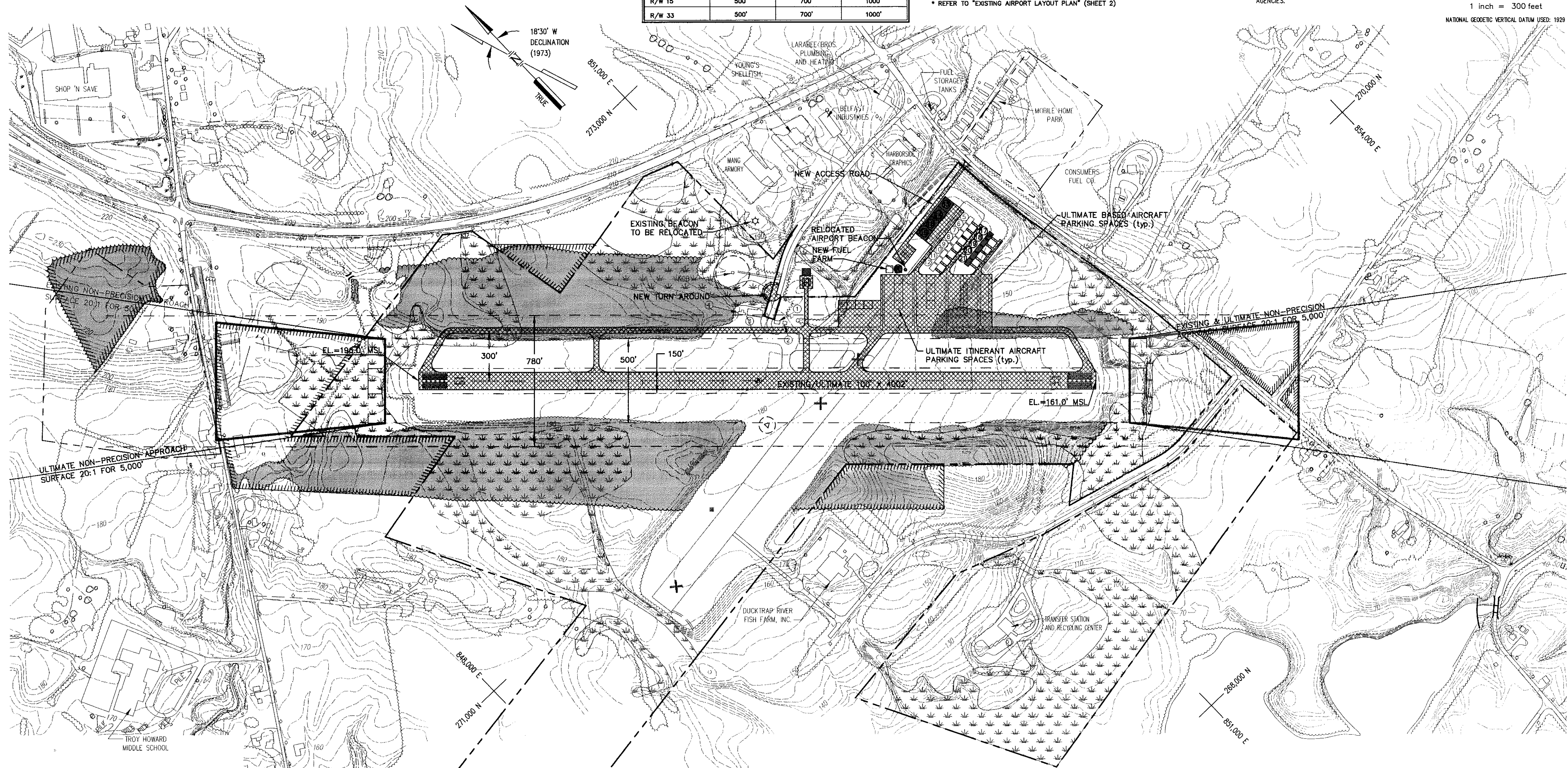
FOR APPROVAL BY CITY OF BELFAST, MAINE

APPROVED BY: *[Signature]*
CITY MANAGER

DATE: 10/26/99

** NOTE: INFO SHOWN ON PLAN IS SKETCH LEVEL ONLY AND DEPICTS POTENTIAL WETLANDS ON AIRPORT PROPERTY. ANY DEVELOPMENT IN THE FUTURE SHOULD REQUIRE ON-SITE WETLAND DELINEATION, AND COORDINATION WITH ASSOCIATED ENVIRONMENTAL AGENCIES.

GRAPHIC SCALE
300 0 150 300 600
1 inch = 300 feet
NATIONAL GEODETIC VERTICAL DATUM USED: 1929



Dufresne-Henry, Inc.
22 Free Street
Portland, Maine 04101-3900
TEL (207) 775-3211 FAX (207) 775-6434

BELFAST MUNICIPAL AIRPORT
AIP # 3-23-0007-01

ULTIMATE AIRPORT LAYOUT PLAN

BELFAST

| | |
|----------------|--------------|
| Client No. | 811005 |
| Proj. Manager | C.L. NIEWOLA |
| Proj. Designer | C.L. NIEWOLA |
| Drawn By | M.R. STACEY |
| Checked By | C.L. NIEWOLA |
| Scale | 1"=300' |
| Approved | D. C. DARGIE |
| Date | 05-26-99 |

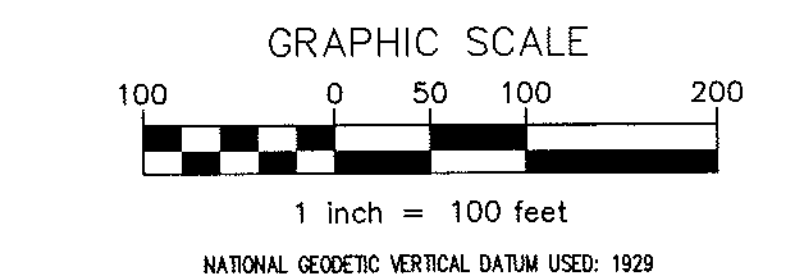
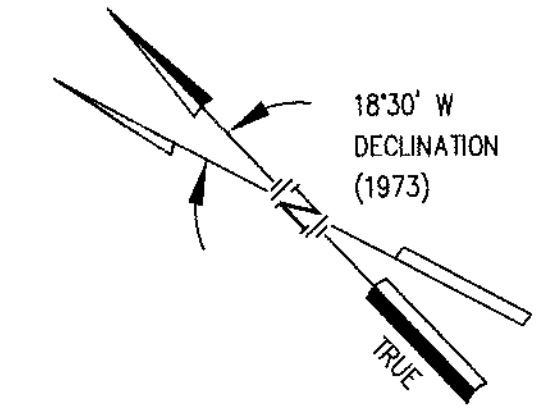
Sheet 3 of 7
DAS TITLED

| EXISTING | ULTIMATE | BUILDINGS |
|----------|----------|-----------------------------|
| ① | (A) | ADMINISTRATION BUILDING |
| ② | | STORAGE SHED |
| ③ | | FBO HANGAR |
| ④ | | PRIVATE T-HANGAR |
| ⑤ | | PRIVATE CONVENTIONAL HANGAR |
| ⑥ | | PRIVATE CONVENTIONAL HANGAR |
| ⑦ | | PRIVATE CONVENTIONAL HANGAR |
| ⑧ | | PRIVATE CONVENTIONAL HANGAR |
| ⑨ | | PRIVATE CONVENTIONAL HANGAR |
| ⑩ | | PRIVATE CONVENTIONAL HANGAR |
| ⑪ | | PRIVATE CONVENTIONAL HANGAR |
| ⑫ | | PRIVATE CONVENTIONAL HANGAR |
| | ⑬ | PRIVATE CONVENTIONAL HANGAR |
| | ⑭ | PRIVATE CONVENTIONAL HANGAR |
| | ⑮ | PRIVATE CONVENTIONAL HANGAR |
| | ⑯ | PRIVATE CONVENTIONAL HANGAR |
| | ⑰-⑱ | PRIVATE T-HANGARS |

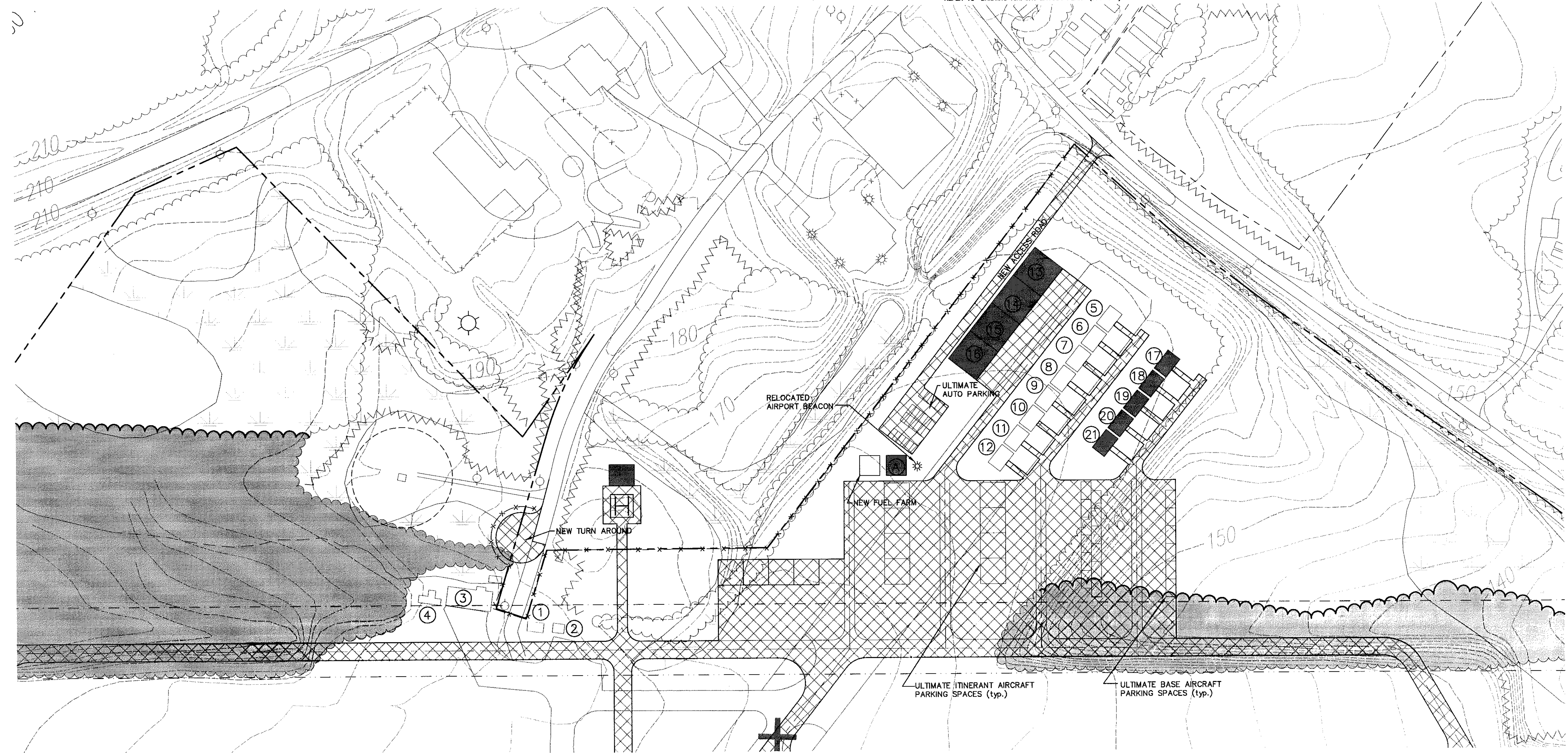
| AIRPORT DATA | EXISTING | ULTIMATE |
|-------------------------------|---|---|
| AIRPORT ELEVATION | 196.0' MSL | SAME |
| AIRPORT REFERENCE POINT | LAT. 44°24'34.873"N LONG. 69°00'44.124"W | LAT. 44°24'34.020"N LONG. 69°00'45.370"W |
| MEAN MAX. TEMP. (HOTTEST MO.) | 81°F | SAME |
| TAXIWAY LIGHTING | NONE | MIL |
| TAXIWAY MARKING | CENTERLINE, SIGNAGE | SAME |
| AIRPORT/TERMINAL NAVAIDS | LIGHTED WINDCONE ROTATING BEACON/NDB | LIGHTED WINDCONE ROTATING BEACON |
| AIRPORT REFERENCE CODE (ARC) | BI | BI |
| ACREAGE OWNED IN FEE SIMPLE | 221± ACRES | SAME |
| ACREAGE OWNED IN EASEMENT | 80± ACRES | 107 ± ACRES |
| USE / OWNERSHIP | PUBLIC/PUBLIC | SAME |

NOTE: SPACING BETWEEN ULTIMATE CONVENTIONAL HANGARS MAY BE ALTERED AT THE TIME OF DESIGN/CONSTRUCTION TO MEET USER NEEDS.

| LEGEND | EXISTING | ULTIMATE |
|---|-------------|----------|
| PAVEMENT | | |
| AIRPORT PROPERTY LINE | | SAME |
| AVIGATION EASEMENT | | |
| FENCE LINE | | |
| BUILDING | | |
| TREE LINE | | |
| AIRPORT REFERENCE POINT (ARP) | | SAME |
| WETLANDS (SKETCH-MAP LEVEL DELINEATION) ** | | SAME |
| LIGHTED WINDCONE | | SAME |
| SEGMENTED CIRCLE | | SAME |
| MAINE STATE GRID TICKS | | SAME |
| UTILITY POLE | | SAME |
| CONTOURS (2-FOOT INTERVALS) | | SAME |
| AIRPORT BEACON | | |
| OBJECT FREE AREA (OFA) | NOT SHOWN * | |
| RUNWAY SAFETY AREA (RSA) | NOT SHOWN * | |
| BUILDING RESTRICTION LINE (BRL) (NOTE: 20' BUILDING HEIGHT) | NOT SHOWN * | |
| DIRT ROADWAY | | SAME |
| BRUSH LINE | | SAME |
| RETAINING WALL | | SAME |
| TREE CLEARING (ASSUME 60' TREES) | N/A | |



* REFER TO "EXISTING AIRPORT LAYOUT PLAN" (SHEET 2)



Dufresne-Henry, Inc.
22 Free Street
Portland, Maine 04101-3900
TEL: (207) 775-3211 FAX: (207) 775-6434

| Rev. | Date | By | Description |
|------|------|----|-------------|
| | | | |
| | | | |

BELFAST MUNICIPAL AIRPORT
AIP # 3-23-0007-01

TERMINAL AREA PLAN

| | | | |
|------------------|-----------------------------|---------------|---------|
| C-111 No. 811005 | Project Manager C.L. NEWOLA | Date 05-26-99 | BELFAST |
| | Proc. Designer C.L. NEWOLA | | |
| | Drawn By M.R. STACEY | | |
| | Checked By C.L. NEWOLA | | |
| | Scale 1"=100' | | |
| | Approved D. C. DARGIE | | |

Sheet 4 of 7
DIAS TITLED

